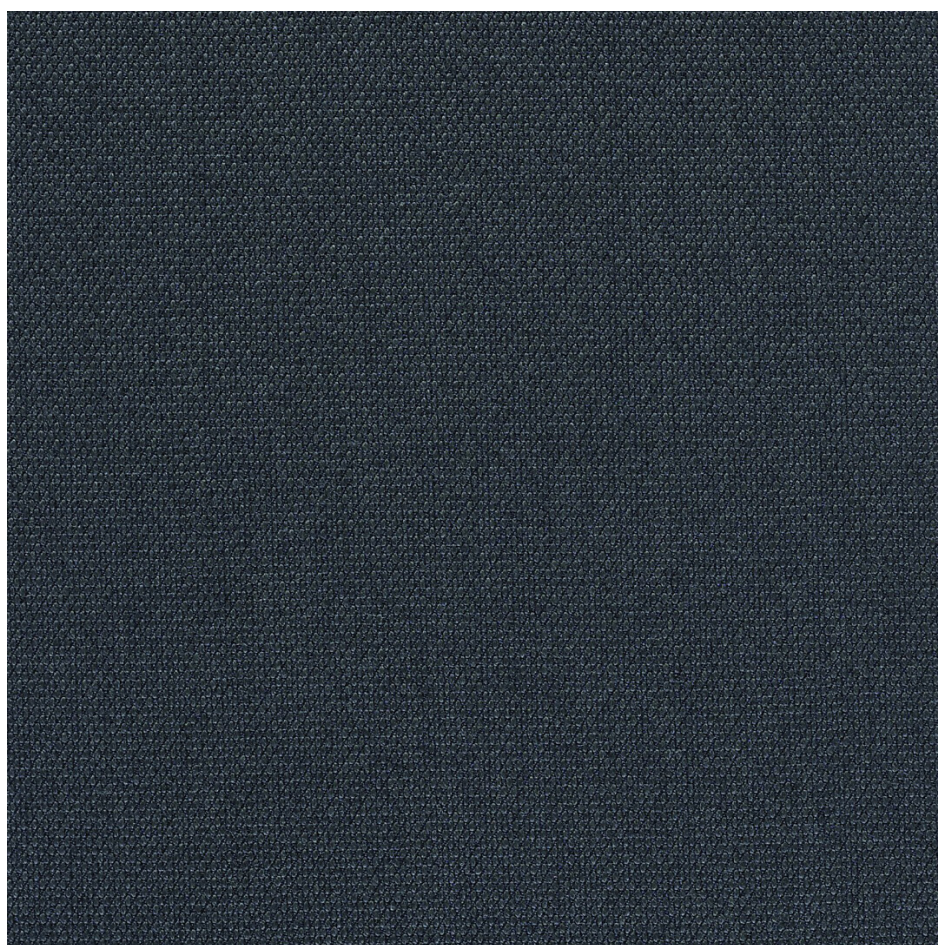


Steelcut Trio

Dark Grey ST383



Steelcut Trio is a hardwearing woollen upholstery textile. Its three-dimensional surface resembles small pyramids or steel points. Despite the complexity of the textile's innovative weave, it has a simple expression. Steelcut Trio is yarn-dyed and made from 3 differently coloured yarns.



COLOUR:

Dark Grey

MATERIAL CODE:

ST383

PILLING:

Note 5-7, ISO 12945

ABRASION RESISTANCE:

100.000 rubs acc. to the Martindale rubs, EN ISO 12947

CLEANING:

Cleaning: Dry clean or clean with foam detergents. **Stain removal:** See special guide.

COLOUR FASTNESS TO LIGHT:

Note 5-7, ISO 105-B02

COLOUR FASTNESS TO RUBBING:

(ISO) dry 4-5, wet 4

FLAMMABILITY:

EN 1021-1/2 ignition source 0-1. BS 5852 ignition source 2-3. DIN 4102 B2. ÖNORM B1 / Q1. NF D 60 013. UNI 9175 1IM. US Cal. Tech. Bull. 117. NFPA 260. AS/NZS 3837 Class 2. IMO A.652(16). Crib 5 when flame protected (copy of test report available).

MATERIAL:

90% new wool, worsted. 10% nylon

SUPPLIER:

Kvadrat

ECOLOGICAL FEATURES (MATERIALS):

EU Ecolabel
GREENGUARD Gold certified
Environmental Product Declaration certified
Health Product Declaration® certified