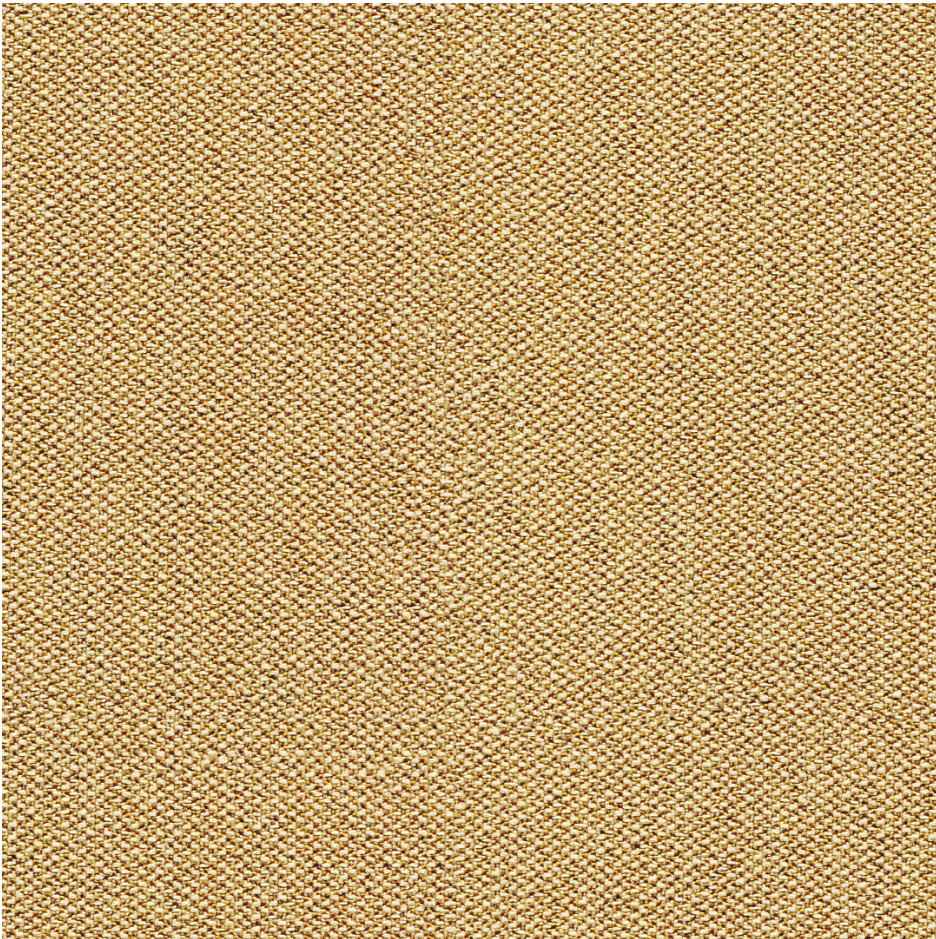


# Era



---

Era is a subtle, two tone polyester fabric containing stretch in both directions for ease of upholstery. The baby herringbone weave offers an understated contemporary texture while its colouring technique provides close up intrigue.

---

**PILLING:**

5 - EN ISO 12945-2

---

**ABRASION RESISTANCE:**

100.000 rubs - (Martindale)  
BS EN ISO 12947-2

---

**COLOUR FASTNESS TO LIGHT:**

6-7 ISO 105 - B02

---

**COLOUR FASTNESS TO RUBBING:**

4/4 EN ISO 105x12 (wet/dry)

---

**FLAMMABILITY:**

EN 1021 - 1 (cigarette)  
EN 1021 - 2 (match)  
BS 7176 Low Hazard

---

**MATERIAL:**

100% Polyester, non metallic dyestuffs

---

**SUPPLIER:**

Camira

---

**ECOLOGICAL FEATURES (MATERIALS):**

STANDARD 100 by OEKO-TEX®

**ALL COLOURS:**

All colours available in the fabric, with upholstered products typically taking between 25-50 working days to deliver, depending on the product and the quantity ordered.

