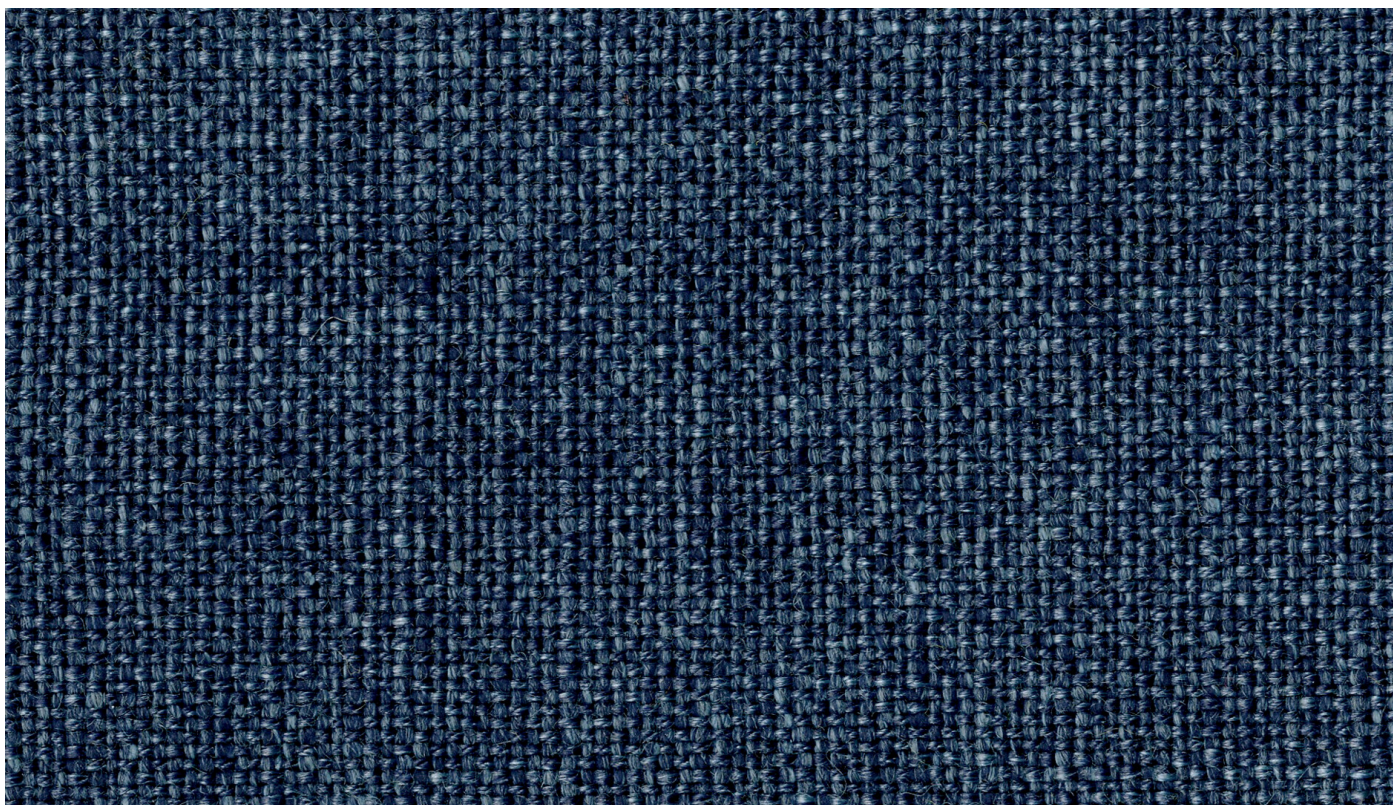


# Rami



---

Rami is a wool-ramie blend fabric with many advantages. The different materials absorb colours differently when dyed, giving the fabric depth. The blend also means that the fabric doesn't wrinkle as easily as pure linen. Both ramie and wool also have excellent moisture-absorbing features.

---

**PILLING:**

Note 3, EN ISO 12945

---

**ABRASION RESISTANCE:**

70.000 Martindale rubs, EN ISO 12947-2

---

**COLOUR FASTNESS TO LIGHT:**

Note 5-7, ISO 105-B02

---

**COLOUR FASTNESS TO RUBBING:**

(ISO) 105-X12 dry 4/5, wet 3-4/5

---

**FLAMMABILITY:**

EN 1021-1/2, BS 5852 part 5, DIN 4102 B1, IMO FTP Code Part 8(IMO Res.A 652 (16))

---

**MATERIAL:**

80% wool, 20% rami

---

**SUPPLIER:**

Svensson

---

**ECOLOGICAL FEATURES (MATERIALS):**

STANDARD 100 by OEKO-TEX®



**ALL COLOURS:**

All colours available in the fabric, with upholstered products typically taking between 20-50 working days to deliver, depending on the product and the quantity ordered.

