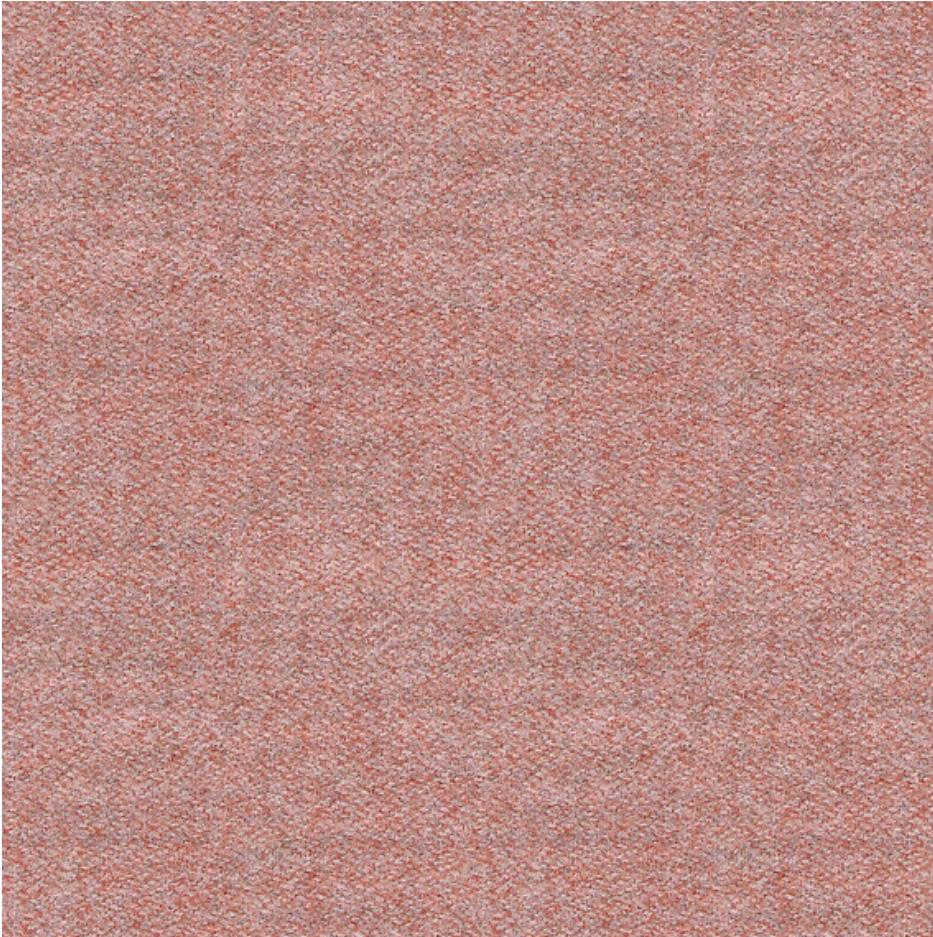


Synergy



Synergy is a soft handle wool blend fabric, featuring exquisite fibre dyed shades and sumptuous piece dyed solids.



PILLING:

4-4 - BS EN ISO 12945-2

ABRASION RESISTANCE:

100.000 rubs - (Martindale)
BS EN ISO 12947-2

COLOUR FASTNESS TO LIGHT:

5-6 - EN ISO 105 - B02

COLOUR FASTNESS TO RUBBING:

Wet: 4, Dry: 4 (ISO 105 - X12:2002)

FLAMMABILITY:

EN 1021 - 1 Cigarette, EN 1021 - 2 Match, NF D
60-013,ÖNORM B 3825 & A 3800-1
EN 13501-1 Adhered Class D, s1, d0, EN 13501-1 Adhered
Class B, s1, d0 when FR treated
EN 13501-1 Unadhered Class D, s2,d0 when FR treated
BS 5867 : Part 2: Type B Curtains & Drapes when FR
treated

MATERIAL:

95 % wirgin wool / 15 % polyamide

SUPPLIER:

Camira

ECOLOGICAL FEATURES (MATERIALS):

EU Ecolabel

ALL COLOURS:

All colours available in the fabric, with upholstered products typically taking between 25-50 working days to deliver, depending on the product and the quantity ordered.

