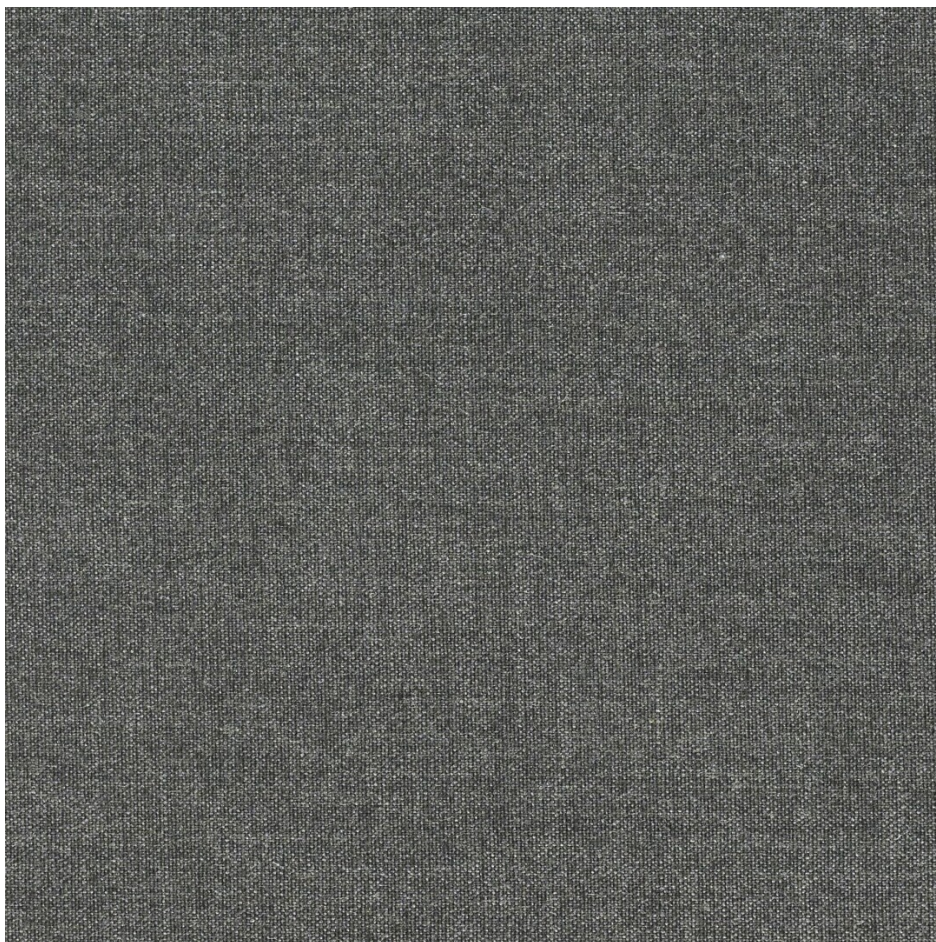


# Remix 3

## Grey RX163



Remix is a woollen upholstery fabric made from melange yarns, with each thread consisting of three different colours. For each colourway, two different threads are used. The result is irregular colours playing across the surface of the fabric.



---

**COLOUR:**

Grey

---

**MATERIAL CODE:**

RX163

---

**PILLING:**

Note 3-4, EN ISO 12945

---

**ABRASION RESISTANCE:**

100.000 rubs – Martindale EN ISO 12947

---

**CLEANING:**

**Cleaning:** Dry clean or clean with foam detergents.**Stain removal:** See special guide.

---

**COLOUR FASTNESS TO LIGHT:**

Note 5-7, ISO 105-B02

---

**COLOUR FASTNESS TO RUBBING:**

4/4-5 - EN ISO 105x12 (wet/dry)

---

**FLAMMABILITY:**

EN 1021-1/2, BS 5852, ignition source 2-3, Önorm B1/Q1, UNI 9175, 1IM, Cal. Tech. Bull. 117, Sec. E, IMO A.652(16), Crib 5, B2 and M2 when flame protected, No use of brominated flame retardants

---

**MATERIAL:**

90 % new wool, 10% nylon

---

**SUPPLIER:**

Kvadrat

---

**ECOLOGICAL FEATURES (MATERIALS):**

EU Ecolabel  
GREENGUARD Gold certified  
Environmental Product Declaration certified  
Health Product Declaration® certified