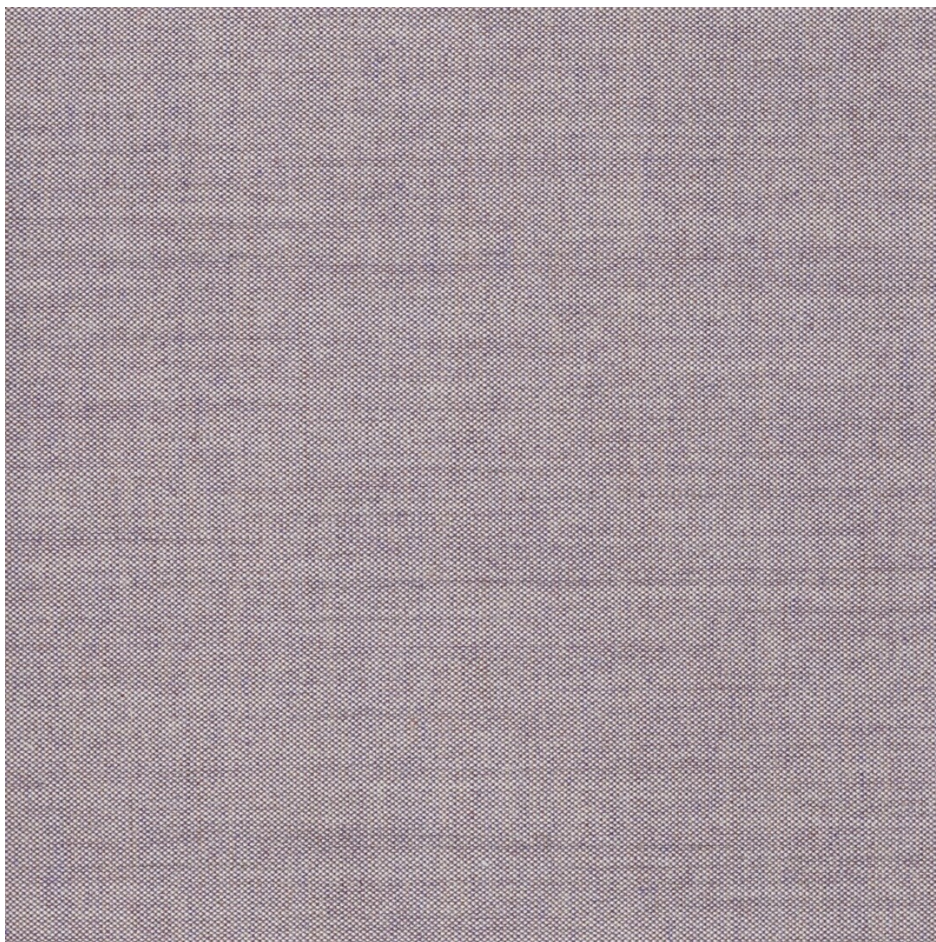


Remix 3

Grey-Lilac RX682



Remix is a woollen upholstery fabric made from melange yarns, with each thread consisting of three different colours. For each colourway, two different threads are used. The result is irregular colours playing across the surface of the fabric.



COLOUR:

Grey-Lilac

MATERIAL CODE:

RX682

PILLING:

Note 3-4, EN ISO 12945

ABRASION RESISTANCE:

100.000 rubs – Martindale EN ISO 12947

CLEANING:

Cleaning: Dry clean or clean with foam detergents.**Stain removal:** See special guide.

COLOUR FASTNESS TO LIGHT:

Note 5-7, ISO 105-B02

COLOUR FASTNESS TO RUBBING:

4/4-5 - EN ISO 105x12 (wet/dry)

FLAMMABILITY:

EN 1021-1/2, BS 5852, ignition source 2-3, Önorm B1/Q1, UNI 9175, 1IM, Cal. Tech. Bull. 117, Sec. E, IMO A.652(16), Crib 5, B2 and M2 when flame protected, No use of brominated flame retardants

MATERIAL:

90 % new wool, 10% nylon

SUPPLIER:

Kvadrat

ECOLOGICAL FEATURES (MATERIALS):

EU Ecolabel GREENGUARD Gold certified Environmental Product Declaration certified Health Product Declaration® certified