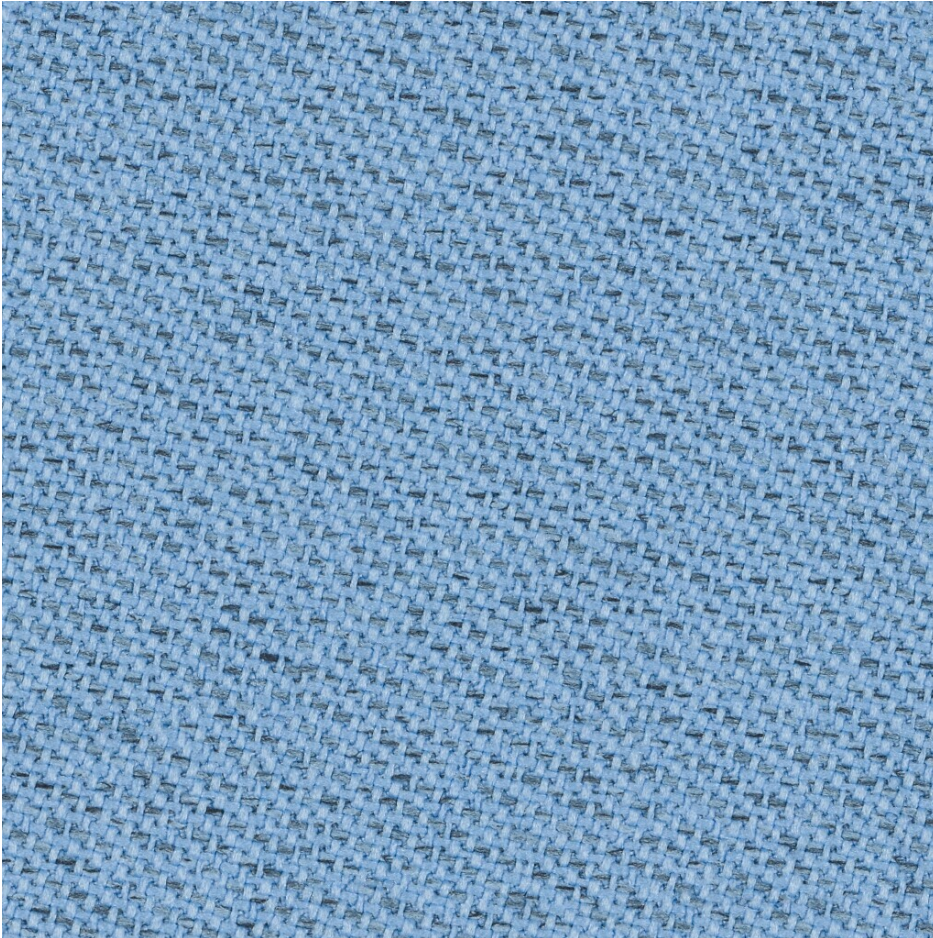


Chili

Light Blue CH66172



Chili is made from post-consumer recycled flame retardant polyester. The fabric offers superior flame retardancy and is designed for use in environments where fire safety is an absolute top priority.

COLOUR:

Light Blue

MATERIAL CODE:

CH66172

PILLING:

4-5 (scale 1-5) - EN ISO 12945-2

ABRASION RESISTANCE:

60.000 rubs martindale (EN ISO 12947-2) 100.000 double rubs wyzenbeek (ASTM D4157-07) (heavy duty upholstery)

CLEANING:

wash or dry cleaning P(W) 60°C shrinkage max. 3%. Chili is made of polyester which is a material suited for environments with special requirements for cleaning.

COLOUR FASTNESS TO LIGHT:

5-8 (scale 1-8) - EN ISO 105-B02

COLOUR FASTNESS TO RUBBING:

4-5/4-5 (scale 1-5) - EN ISO 105x12 (wet/dry)

FLAMMABILITY:

BS EN 1021 1&2 Cigarette and Match

MATERIAL:

75% post-consumer recycled polyester fr / 25% polyester fr (fr inside the fiber)

SUPPLIER:

Gabriel

ECOLOGICAL FEATURES (MATERIALS):

STANDARD 100 by OEKO-TEX® 100% free of heavy metals