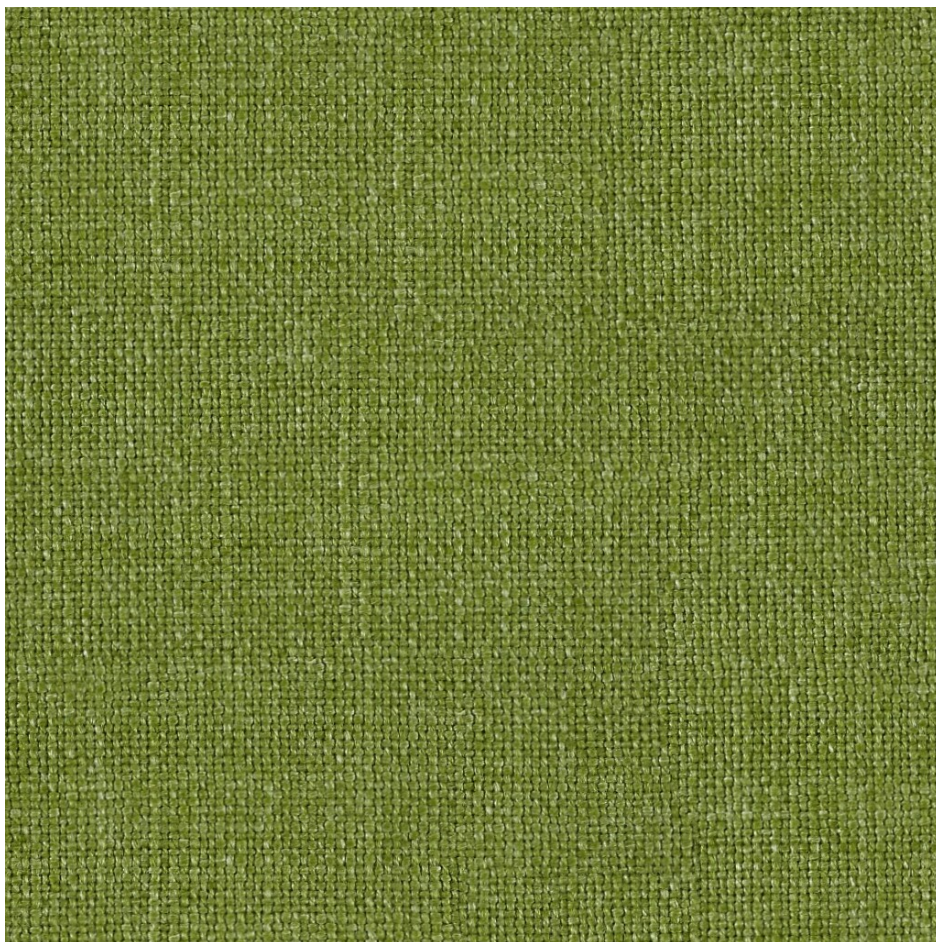


# Rami

## Light Green RA6165



---

Rami is a wool-ramie blend fabric with many advantages. The different materials absorb colours differently when dyed, giving the fabric depth. The blend also means that the fabric doesn't wrinkle as easily as pure linen. Both ramie and wool also have excellent moisture-absorbing features.

---

**COLOUR:**

Light Green

---

**MATERIAL CODE:**

RA6165

---

**PILLING:**

Note 3, EN ISO 12945

---

**ABRASION RESISTANCE:**

Approximately 70.000 Martindale rubs, EN ISO 12947-2

---

**CLEANING:**

Woollen upholstery fabric should be lightly vacuumed each week and cleaned more thoroughly at least once a year to maintain both its function and appearance. Woollen upholstery fabric can be dry cleaned.

---

**COLOUR FASTNESS TO LIGHT:**

Note 5-7, ISO 105-B02

---

**COLOUR FASTNESS TO RUBBING:**

(ISO) 105-X12 dry 4/5, wet 3-4/5

---

**FLAMMABILITY:**

EN 1021-1/2, BS 5852 part 5, DIN 4102 B1, IMO FTP Code Part 8(IMO Res.A 652 (16))

---

**MATERIAL:**

80% wool, 20% rami

---

**SUPPLIER:**

Svensson

---

**ECOLOGICAL FEATURES (MATERIALS):**

STANDARD 100 by OEKO-TEX®